

PART OF SEC. 29-30, T.7N., R.3E., S.L.B. & M.  
**EVERGREEN PARK SUBDIVISION NO. 1**

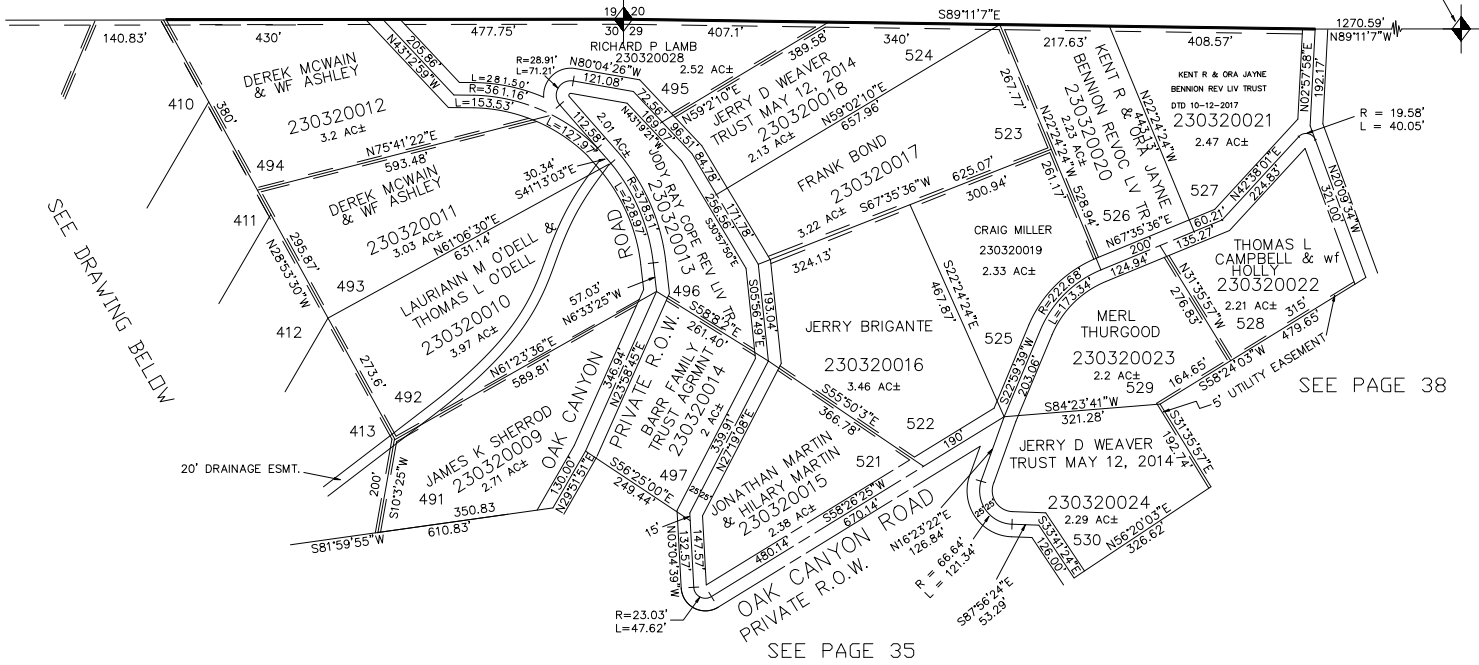
LOTS 283-285, 406-413, 491-497, 521-530

TAXING UNIT: 520

IN WEBER COUNTY  
SCALE 1" = 200'

SEE PAGE 13

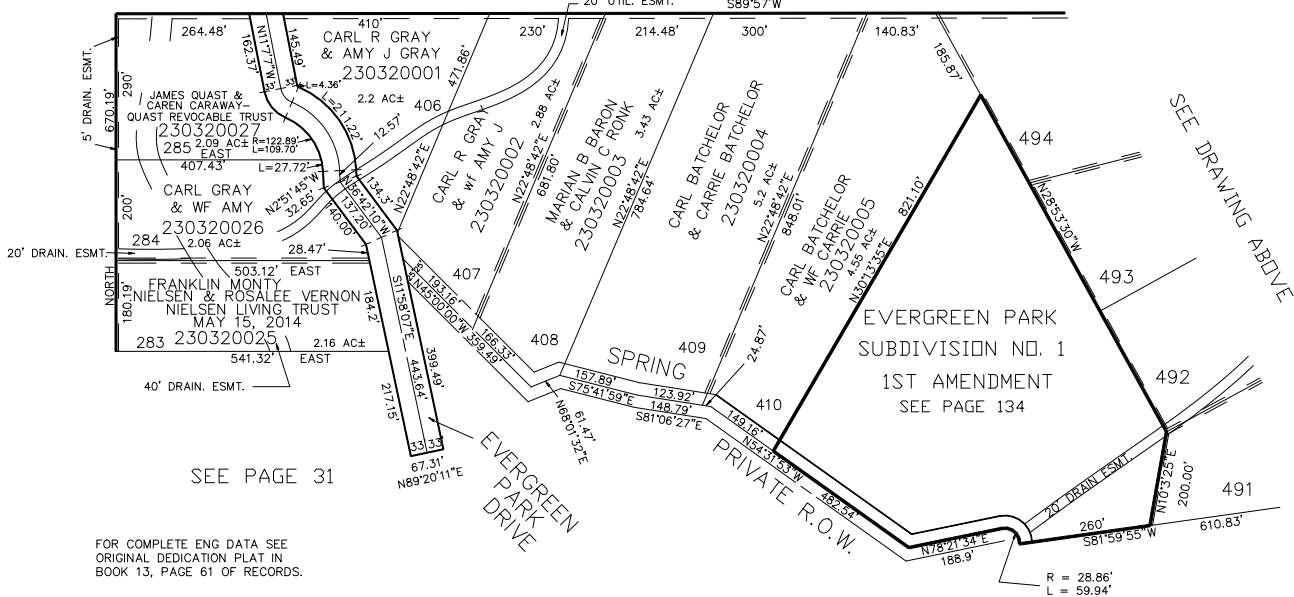
N. 1/4 SEC. 17N., R.3E.



SEE PAGE 38

SEE PAGE 35

SEE PAGE 13



SEE PAGE 31

SEE DRAWING ABOVE

EVERGREEN PARK  
SUBDIVISION NO. 1  
1ST AMENDMENT  
SEE PAGE 134

FOR COMPLETE ENG DATA SEE  
ORIGINAL DEDICATION PLAT IN  
BOOK 13, PAGE 61 OF RECORDS.

ALL DASHED LINES SHOWN  
ON LOT LINES ARE 10' UTILITY  
EASMENTS UNLESS OTHERWISE NOTED.

SEE PAGE 35